



# Mail-SeCure™

## Email Security at the Perimeter

"PineApp's Mail-SeCure professional, highly successful and user friendly solution provided us with the best way to protect our customers from email attacks. Mail-SeCure's advanced management allowed us to effectively monitor and manage our customers' traffic".

*Joseph McNealy, Systems administrator, Telepak Networks*

# Mail-SeCure

## Company Profile

PineApp™, a leader in securing networks and email systems, offers comprehensive appliance solutions for small, medium and large organizations.

PineApp's products are well known in the industry and have received very positive reviews, positioning them as leaders in their field.

Founded in 2002, PineApp is headquartered in Israel, with branch offices in the US, UK, Italy, Spain, France, Russia and South Africa.

In the past five years, PineApp has specialized in email and content security systems and already has significant presence in more than 50 countries. This specialty enabled PineApp to establish itself as a pioneer in developing unique and innovative engines to fight the different threats.

PineApp Mail-SeCure is a leading email security appliance that protects your organization from both targeted and non-targeted email-related threats, such as Viruses, new-age Virus Outbreaks, Worms and Trojan-horses.

Mail-SeCure, a complete email perimeter security solution, blocks most threats prior to receiving the content of the message. This allows organizations to function better by significantly lowering resource consumption and bandwidth, thus saving the organization from having to upgrade its current systems, in order to overcome its lack of network resources.

Mail-SeCure's inexpensive, high-performance security solution ensures a fast return of investment, making this solution beneficial to all sized businesses.



## Features

### Perimeter led Security

The complexity and volume of email sent by spammers and hackers is continuously on the rise. This, together with the specific targeting of businesses through Mail Bombing, DoES, Backscatter and other exploitations, requires ever-increasing resources to counter these threats. PineApp's perimeter led email security solution has the ability to block unwanted traffic including Viruses, Spam and Phishing, regardless of their content, at the IP level and email envelope level. This frees up bandwidth and resources for the content analysis of the remaining emails by the Anti-Virus and Anti-Spam filters.

### PineApp ZDS™ - Zombie Detection System

Over 90% of Spam and Viruses are sent through Zombie computers. Zombie computers are computers or servers that have been involuntarily compromised by a Virus or Trojan-horse and are used to send out Spam. Usually, the owners of these computers are unaware that their computers have been compromised.

PineApp's unique ZDS™ provides detection and prevention of such threats at the IP and envelope level. ZDS™ also protects the organization's reputation by blocking traffic emerging from internal zombie-converted computers.

### Anti-Virus Engines

Mail-SeCure incorporates 5 Anti-Virus engines in order to provide full protection against known and unknown security threats. PineApp's embedded Zero-Hour™ technology identifies and blocks new-age Virus outbreaks within minutes and is supported by four additional Anti-Virus engines; Mail-SeCure's unique heuristic worm-detection engine, coupled with F-Secure™'s award-winning Anti-Virus scanning engines.

## Anti-Spam Engines

Fighting spammers has become a challenge, as spammers are constantly improving their technologies in order to bypass Anti-Spam systems. The latest breeds are known as "Image-based Spam" and "PDF-based Spam". PineApp's unique non-OCR technology has the ability to detect image-based Spam based on a single message (using no reference at all). In total, Mail-SeCure incorporates eleven-layers of Anti-Spam technologies (such as IP Reputation and Recurrent Pattern Detection™), in order to provide a high detection ratio of 98.5% with a false positive ratio close to zero.

## Email Policy Management and Enforcement

With ever-increasing legislation and regulations, the use of email needs to be managed in order to protect businesses and their employees from both civil and criminal prosecutions, both of which are on rise, as email becomes the de-facto means of communication. PineApp's Three-tier policy manager enables the business to regulate the flow of both inbound and outbound email, with a set of rules that can be defined for the entire organization, a specific department or group of users, or for the individual user. User and group management can be manually configured, or simply achieved by interconnecting to any existing directory service using the LDAP protocol.

## Load Balancing

Mail-SeCure has an integrated load balancing system. Mail-SeCure's scalable solution enables businesses to grow and optimize their scanning power by stacking two or more Mail-SeCure appliances, adding additional systems rather than replacing existing ones.

## Backscatter Prevention

Non-delivery mail notifications from an unknown source caused by a Virus, Phishing or Spam, known as "Backscatter", may lead to flooding of the organization's mail systems. Additionally, Backscatter causes IT overhead and misuse of employee time. Mail-SeCure is the only product that has a Backscatter detection mechanism, which prevents mail classified as Backscatter from entering the network.

## Inappropriate Content Control (optional)

Inappropriate content such as pornography has become a major concern as it leads to exposure to improper content and to sexual harassment. Mail-SeCure incorporates a new-generation Inappropriate Content Control (ICC) package. The ICC package includes IWF (Internet Watch Foundation) database lookup and an Image-SeCure engine.

## Mail server (optional)

Mail-SeCure has an optional mail server module in which mailboxes can be created and managed using a friendly, simple interface. The web-access feature enables all users to read their mail from anywhere in the world. Mail-SeCure can currently be found in 43 different interface languages.

## Additional benefits

### Automatic Updates

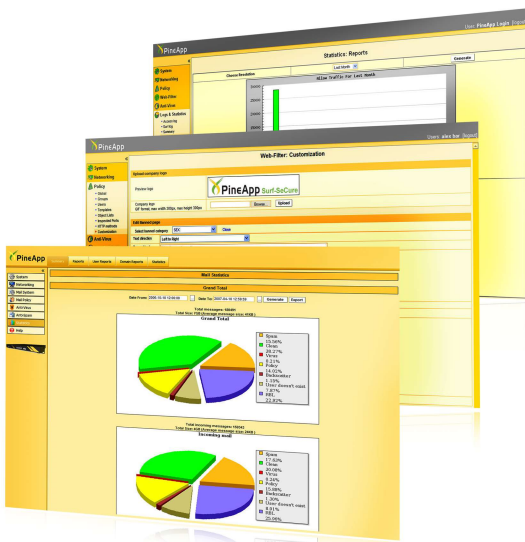
Mail-SeCure constantly communicates with PineApp's update center, for new updates and monitoring, guaranteeing maximum reliability. All software and signature updates are automatic and do not require manual intervention, saving time and increasing efficiency.

### Easy to Use

Mail-SeCure's intuitive and secure web GUI enables easy administration, maintenance and configuration. User-friendly informative logs and statistics are easily produced, enabling the administrator to receive accurate details of the organization's mail traffic.

### Affordable

Mail-SeCure matches the unit model to the organization's mail traffic and not to the number of users in the organization, thereby reducing costs and making this system affordable.



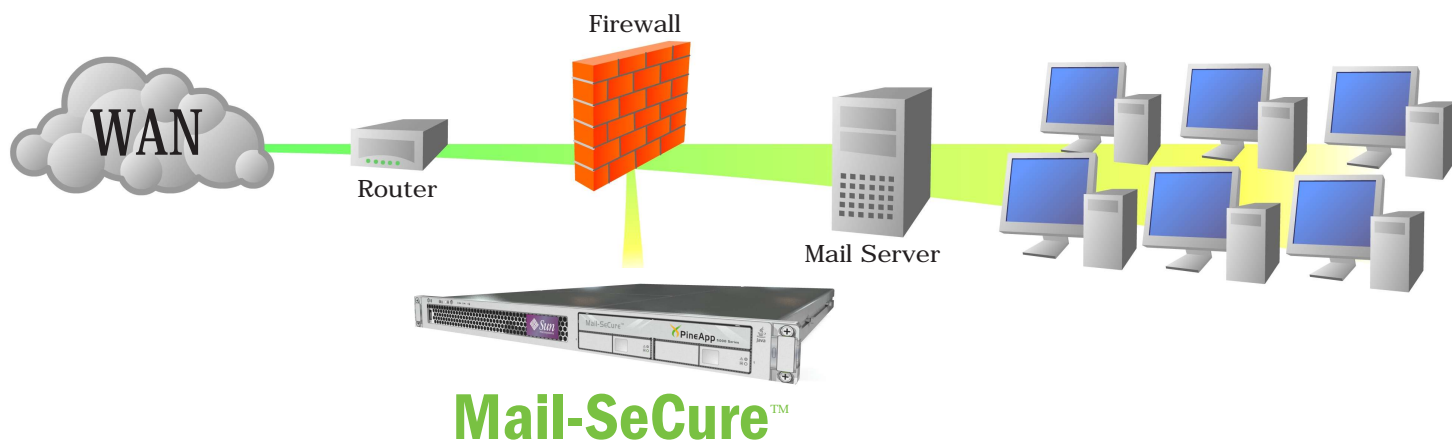
Series Comparison	1000	2000	3000	5000
Licensing (mail users)	Up to 50	Up to 500	Up to 1,500	Up to 10,000
Policy Enforcement	Global	Three-tier Policy	Three-tier Policy	Three-tier Policy
Internal Load Balancing *		✓	✓	✓
Inspected Protocols	SMTP, POP3			
Mail Services Protocols	ESMTP/S with LDAP Authentication support, POP3/S, IMAP4/S, WebAccess**			
Mail Delivery Protocols	SMTP/S, POP3 Pull-mode and Local**			
Anti-Virus Engines	5 engines, including: F-Secure®, Zero-Hour™ and a Heuristic Engine by PineApp			
Anti-Spam Engines	11 layers, including: RPD™ (Recurrent Pattern Detection), RBL, ZDS™ (Zombie Detection System), Bayesian & Rules			
Network Interfaces	1XGbE***	4X10/100Mbps	4XGbE	4XGbE
Storage size	80GB	80GB PATA	80GB SATA	2X73/146GB SAS (RAID1)
Dimensions (WxDxH)	31X35.8X8.75 cm**** (12.2X14.1X3.4 inch)	42.9X36X4.4 cm (16.9X14.2X1.7 inch)	42.9X38.2X4.4 cm (16.9X15X1.7 inch)	43.2X61X4.4 cm (17X24X1.7 inch)
Warranty	1 year limited warranty			
Certifications	FCC, CE, UL, CUL, CB, RoHS	FCC, CE, LUV, RoHS		CE, CB, FCC, LUV, UL, RoHS

\* Achieved by adding an additional unit

\*\* When system acts as a Mail Server

\*\*\*Rack Mount Models: 4X10/100Mbps

\*\*\*\* Rack Mount Dimensions: 42.9X36X4.4 cm (16.9X14.2X1.7 inch)



**Mail-SeCure™**

PineApp International  
8 Hata'asia St. Neshar  
Israel, 36601  
Tel: +972-4-8212-321

PineApp USA  
15615 Alton Parkway, Suite 450  
Irvine, CA 92618  
Tel: +1-877-300-3422

